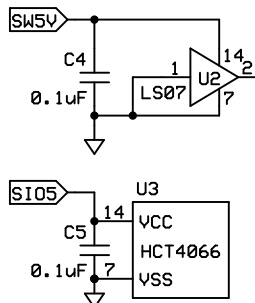
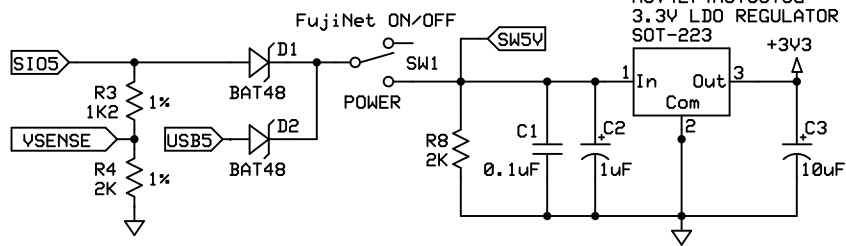


REMOVING POWER FROM U2 AND FROM U3's SWITCH ENABLE PINS DISCONNECTS SIO AND ESP32-WROVER I/O FROM EACHOTHER.

TO ENTER PROGRAM MODE: POWER DOWN FUJINET THEN PRESS & HOLD BUTN 'A' THEN POWER-UP FUJINET.



VSENSE = 3.125 VDC with 5V IN  
USED BY WEB UI TO SHOW SWITCHED 5V



A Re-Designed Version of mozzwald's FujiNet Hardware for Expansion of the Atari 576NUC+ Motherboard.

<b>ATARI 576NUC-FUJINET PROTO</b>		
<b>An AtariBits Production</b>		
Michael St.Pierre	PROTOTYPE V1.5 April 8th 2021	NETWORKING

- TubeDepot.com
- DigiKey.com
- P-LED-DW-WHITE (NTE 30149)
- P-LED-DW-BLUE (NTE 30148)
- P-LED-DW-RED (NTE 30146)