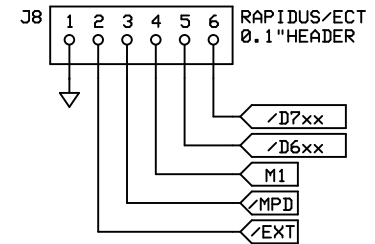
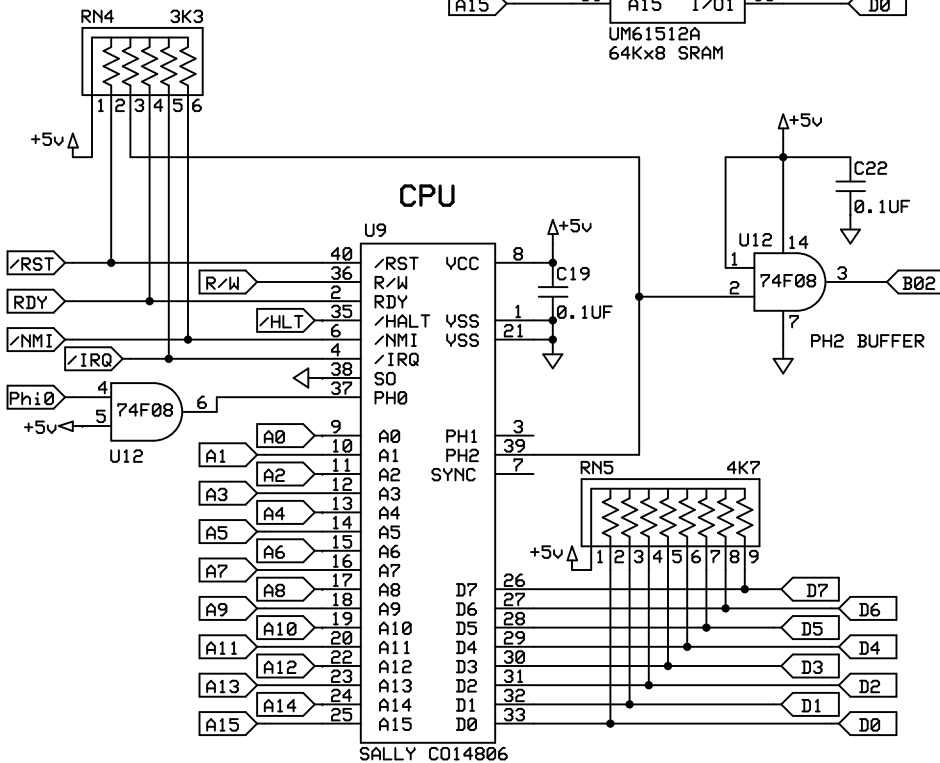
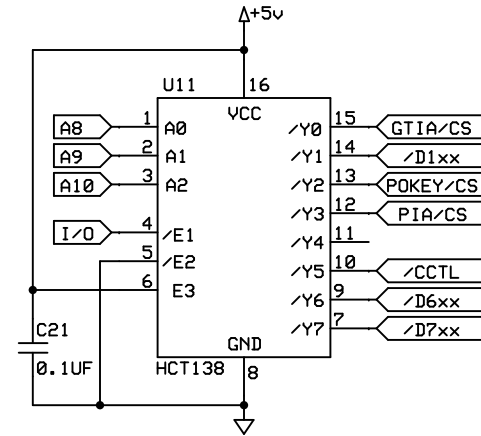


### CHIP SELECT DECODING



\*NOTE: /EXT = /EXTSEL, REQUEST BY EXTERNAL DEVICE (Parallel Bus) TO TURN OFF RAM ACCESS  
/CI = /CASINH, RAM CAS INHIBIT GENERATED BY U1MB MMU DECODING (SAME AS PBI EXTENDB)

## ATARI 1088XLD COMPUTER

An AtariBits Production

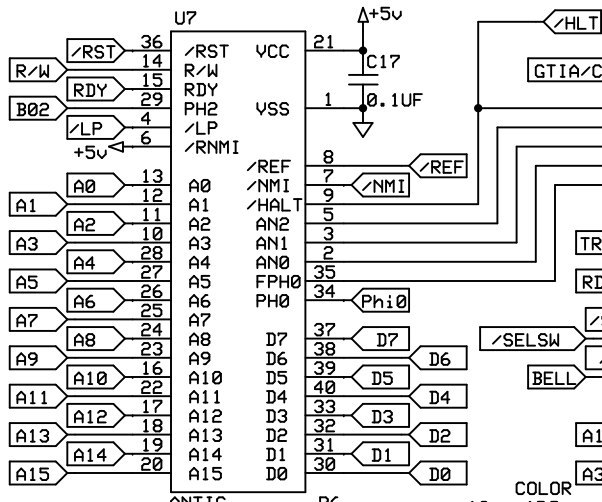
Michael St.Pierre

V1.1 RELEASE

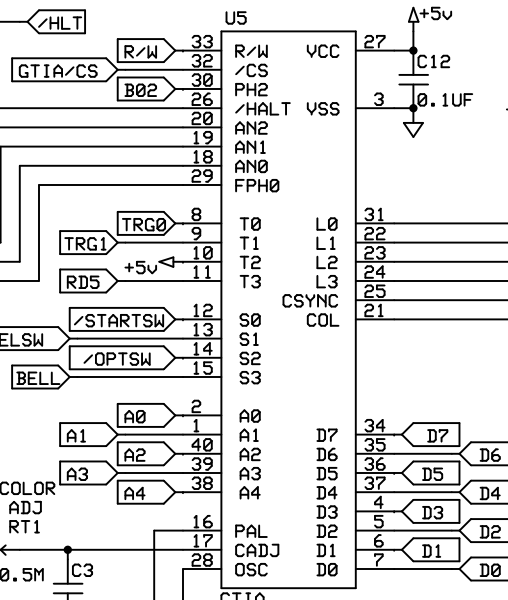
Revised: 8/29/2019

CPU/MEMORY

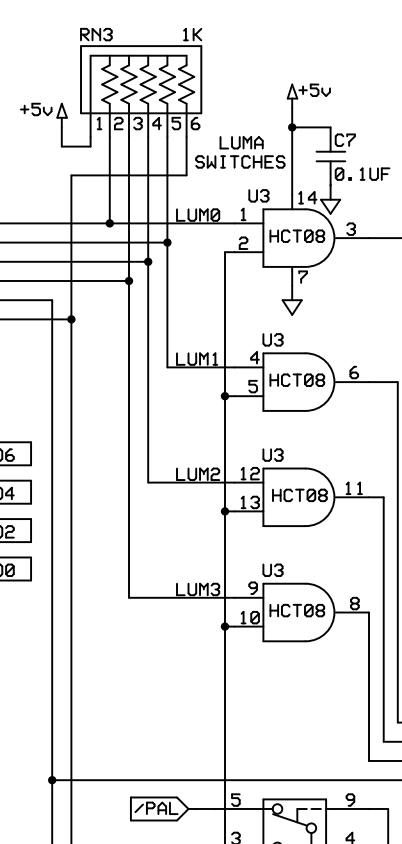
### VIDEO CO-PROCESSOR



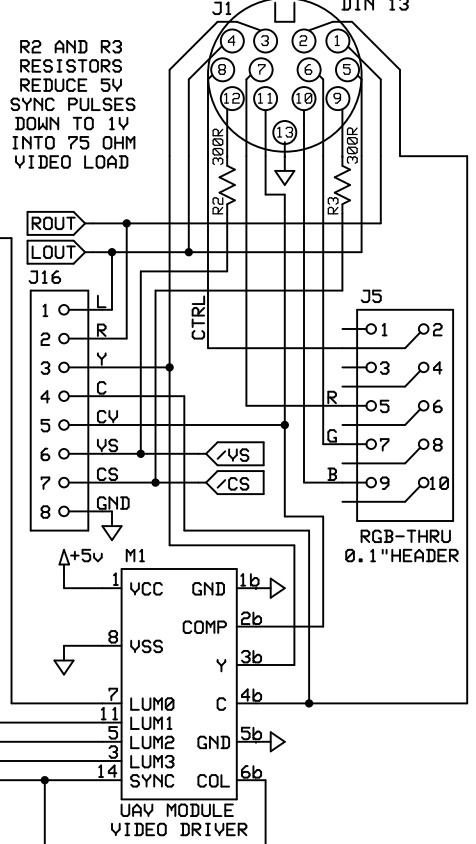
### COLOR TV INTERFACE



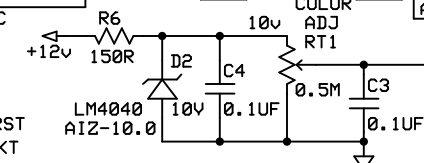
### VIDEO GATING



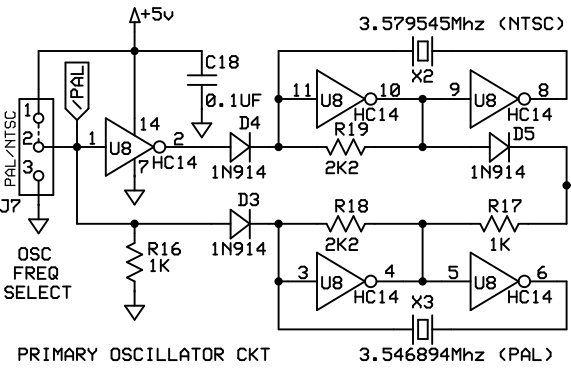
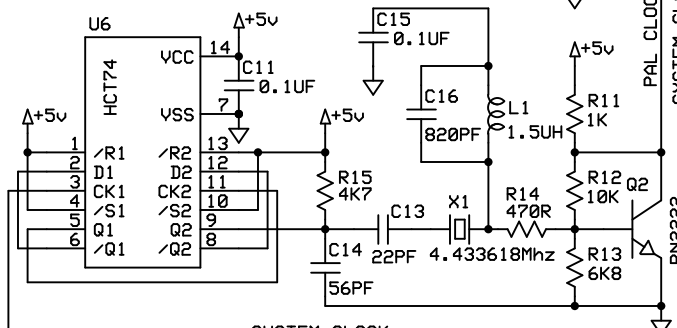
### AUDIO/VIDEO OUT



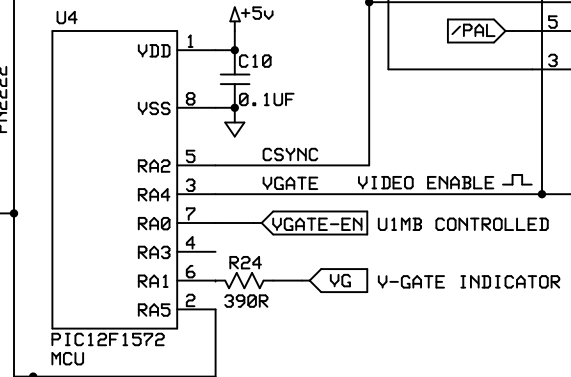
#### PAL COLOR BURST OSCILLATOR CKT



#### SYSTEM CLOCK



#### V-GATE TIMING GENERATOR



VBXE OSC >> CONNECTION  
JUMPER 1-2 FOR STOCK VIDEO

## ATARI 1088XL COMPUTER

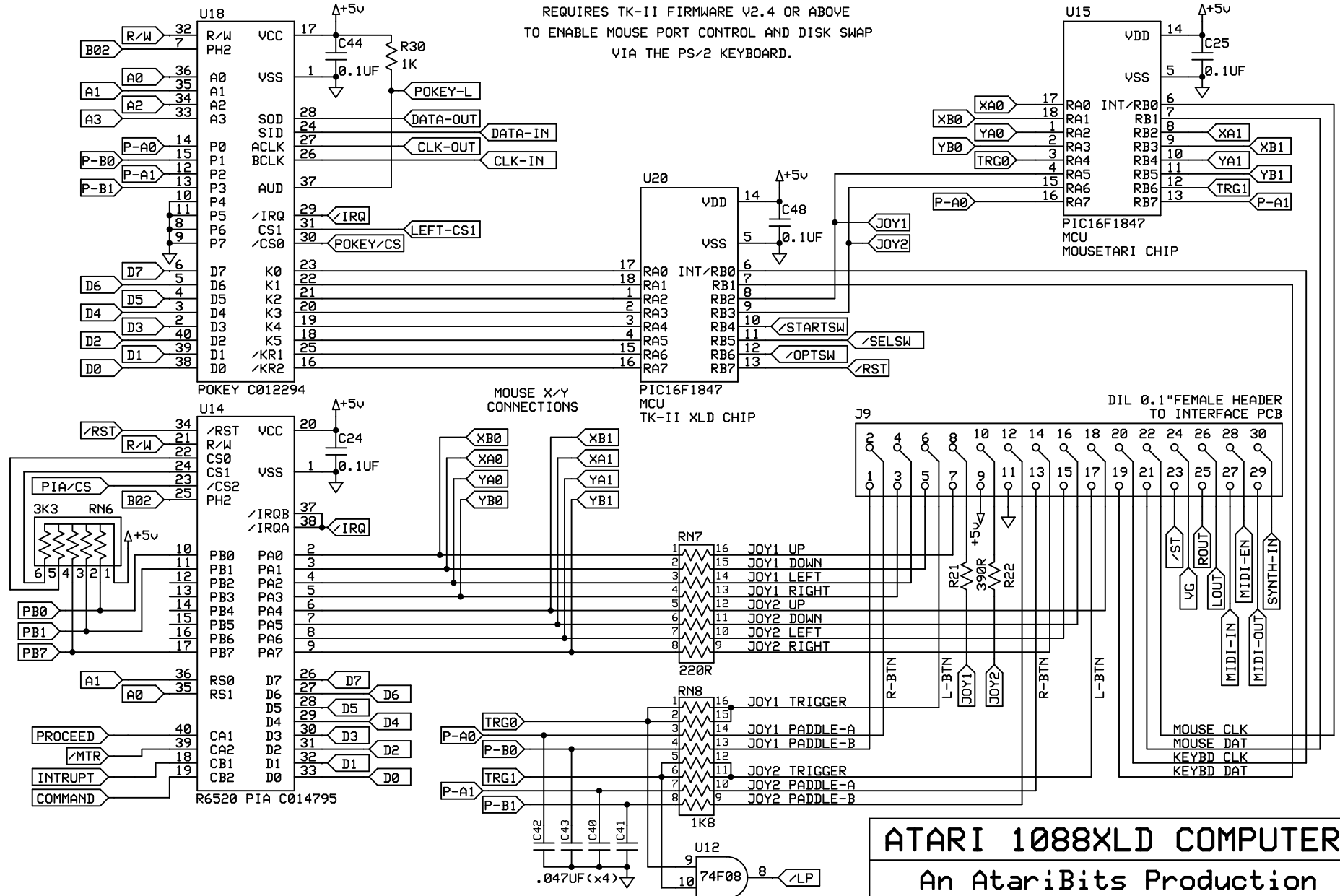
An AtariBits Production

Michael St.Pierre	V1.1 RELEASE Revised: 8/29/2019	VIDEO
-------------------	------------------------------------	-------

SYNC SEPARATOR IS REQUIRED FOR VBXE OR SOPHIA UPGRADES --- ONLY ---

# LEFT CHANNEL POKEY

REQUIRES TK-II FIRMWARE V2.4 OR ABOVE  
TO ENABLE MOUSE PORT CONTROL AND DISK SWAP  
VIA THE PS/2 KEYBOARD.



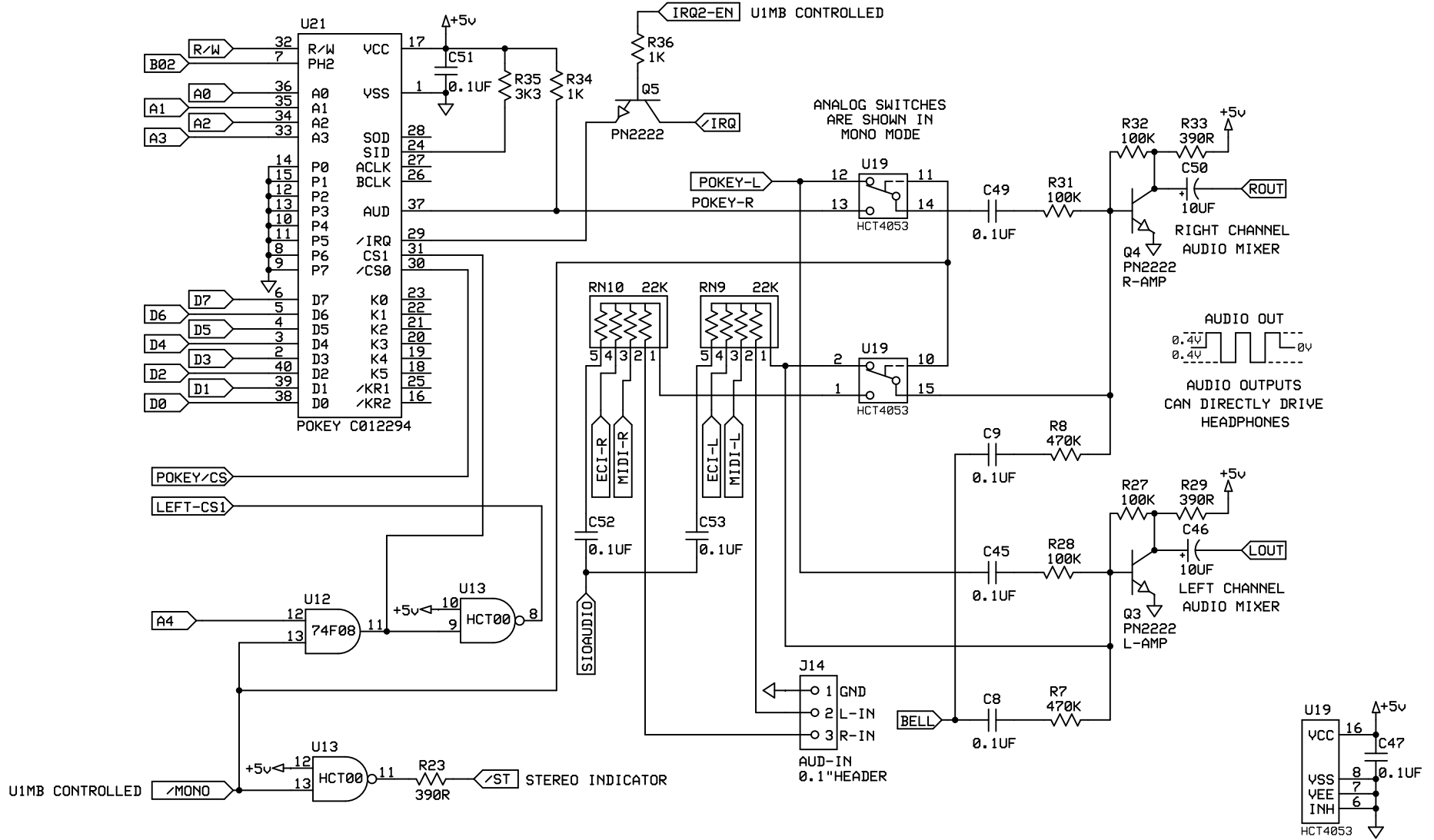
## ATARI 1088XLD COMPUTER

An AtariBits Production

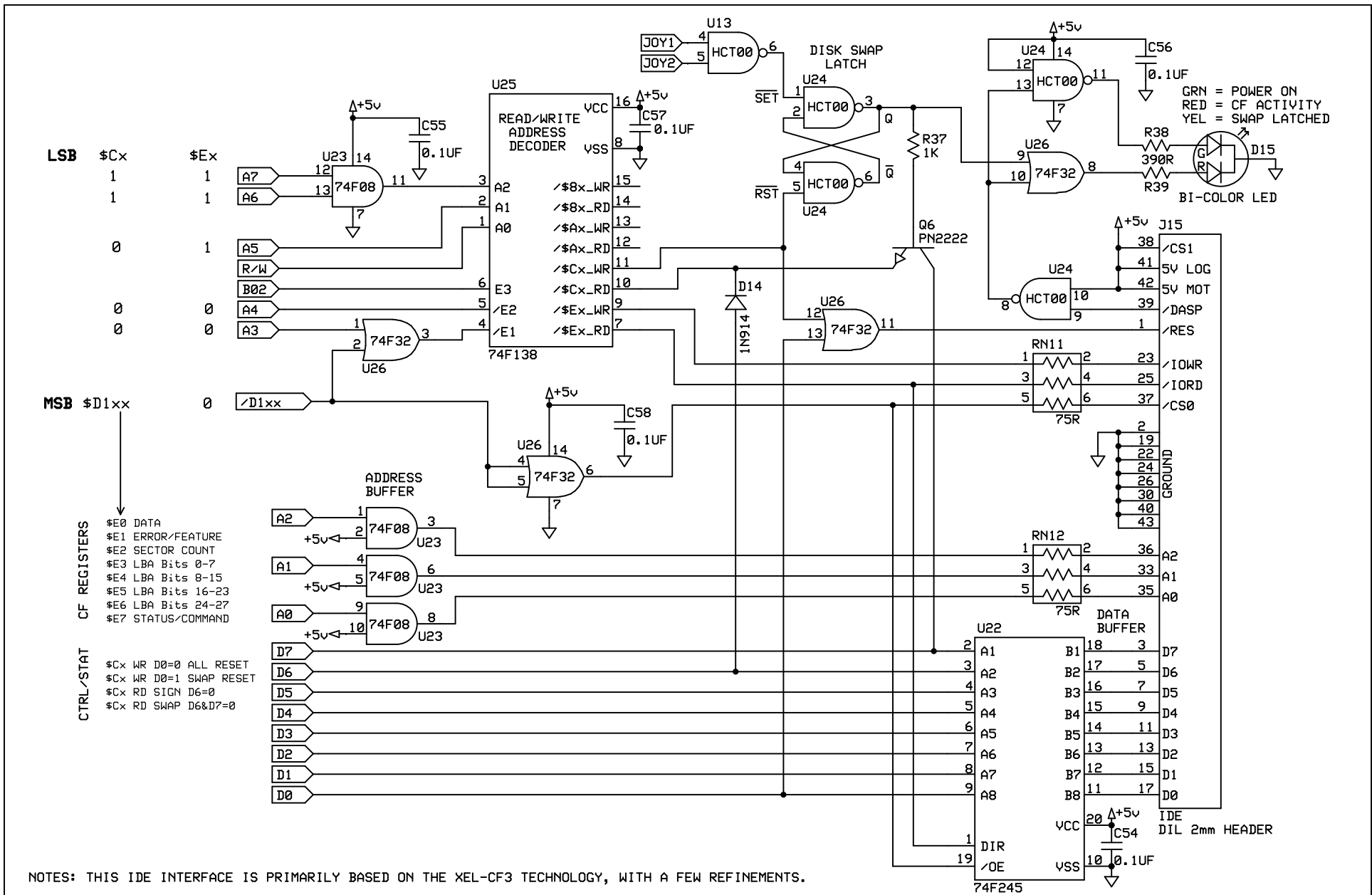
Michael St.Pierre	V1.1 RELEASE	I/0
	Revised: 8/29/2019	

\*NOTE: TK-II PROVIDES ALL RESET SERVICES

# RIGHT CHANNEL POKEY



<b>ATARI 1088XD COMPUTER</b>		
<b>An AtariBits Production</b>		
Michael St.Pierre	V1.1 RELEASE Revised: 8/29/2019	AUDIO



**LSB**    \$Cx    \$Ex

1	1	1
1	1	1
0	1	1
0	0	0
0	0	0

**MSB**    \$D1xx

**CF REGISTERS**

- \$E0 DATA
- \$E1 ERROR/FEATURE
- \$E2 SECTOR COUNT
- \$E3 LBA Bits 0-7
- \$E4 LBA Bits 8-15
- \$E5 LBA Bits 16-23
- \$E6 LBA Bits 24-27
- \$E7 STATUS/COMMAND

**CTRL/STAT**

- \$Cx WR D0=0 ALL RESET
- \$Cx WR D0=1 SWAP RESET
- \$Cx RD SIGN D6=0
- \$Cx RD SWAP D6&D7=0

GRN = POWER ON  
 RED = CF ACTIVITY  
 YEL = SWAP LATCHED

NOTES: THIS IDE INTERFACE IS PRIMARILY BASED ON THE XEL-CF3 TECHNOLOGY, WITH A FEW REFINEMENTS.

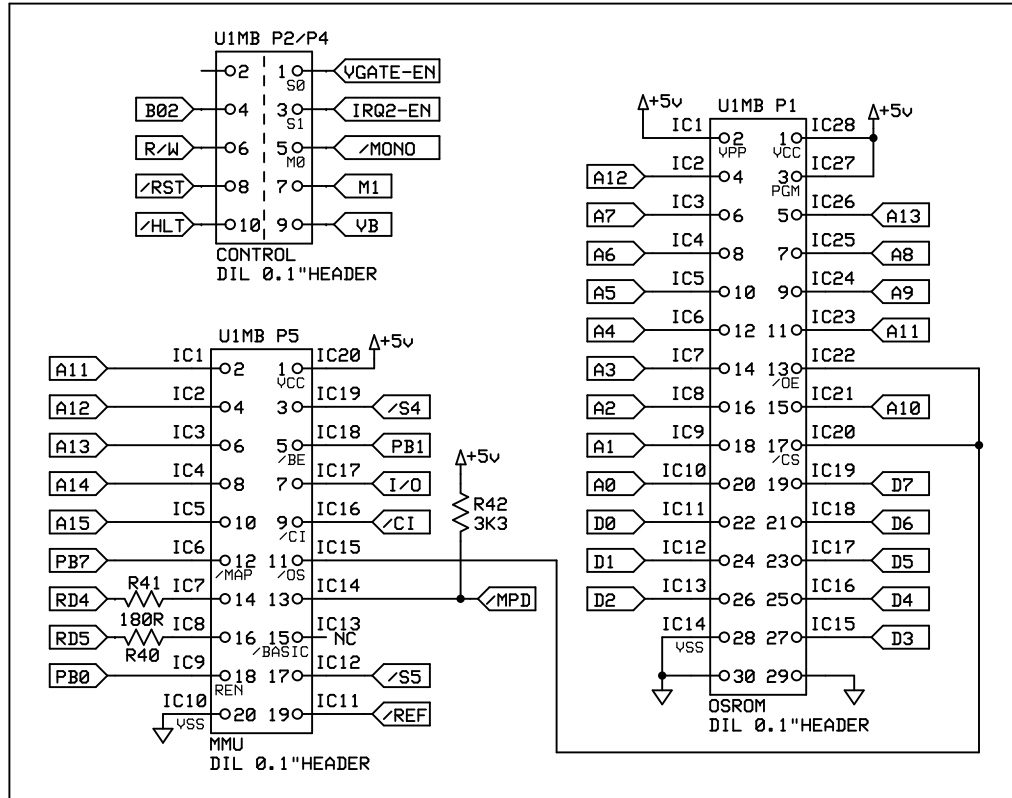
IF YOU DO A READ FROM \$D1Cx BIT 6 WILL ALWAYS BE LOW, THIS IS THE CF3 SIGNATURE. WHEREAS THE OLDER CF2 WILL HAVE BIT 6 READING HIGH. BIT 7 WILL ONLY READ LOW FOR A SWAP BUTTON LATCHED CONDITION, AND HIGH WHEN THE LATCH HAS BEEN RESET.

IF JOY1 and JOY2 SIGNALS ARE MOMENTARILY ACTIVATED AT THE SAME TIME VIA THE TK-II, THEN THE SWAP LATCH WILL BE INITIATED (LATER CLEARED BY THE U1MB BIOS).

<b>ATARI 1088XL COMPUTER</b>		
<b>An AtariBits Production</b>		
Michael St.Pierre	V1.1 RELEASE Revised: 8/29/2019	IDE

M3

### OS & LANGUAGE SLOTS/RAM-EXPANSION/SDX/RTC



Lotharek.com ULTIMATE 1MB MODULE

U1MB/XEL CONTROL BIT DEFAULTS

P4	LOGIC=0	LOGIC=1	COMMITTED
S0	VGATE OFF	VGATE ON	
S1	IRQ2 OFF	IRQ2 ON	
M0	MONO	STEREO	
M1	RAPIDUS ON	RAPIDUS OFF	
VB	PART OF VBXE ADDRESSING		

# ATARI 1088XLD COMPUTER

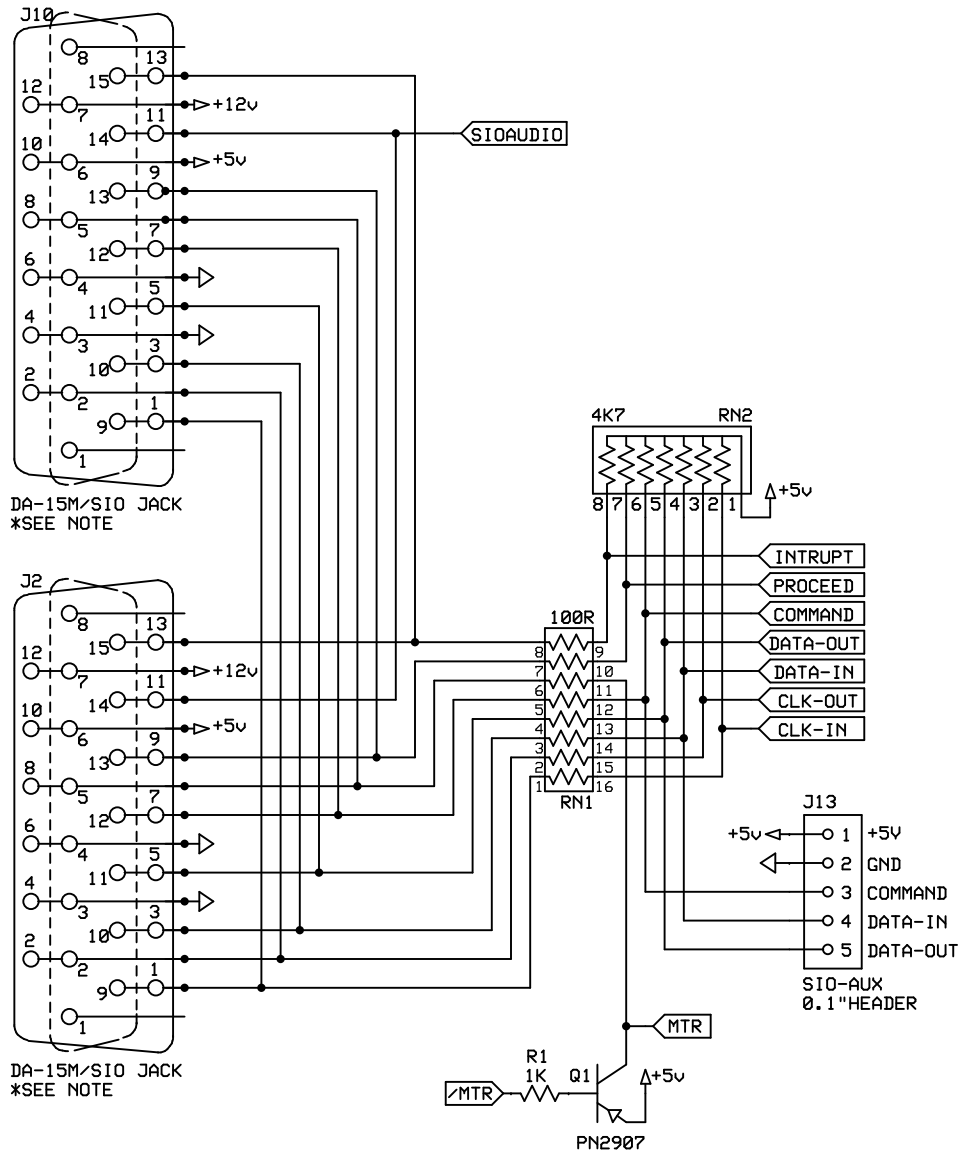
## An AtariBits Production

Michael St.Pierre

V1.1 RELEASE  
Revised: 8/29/2019

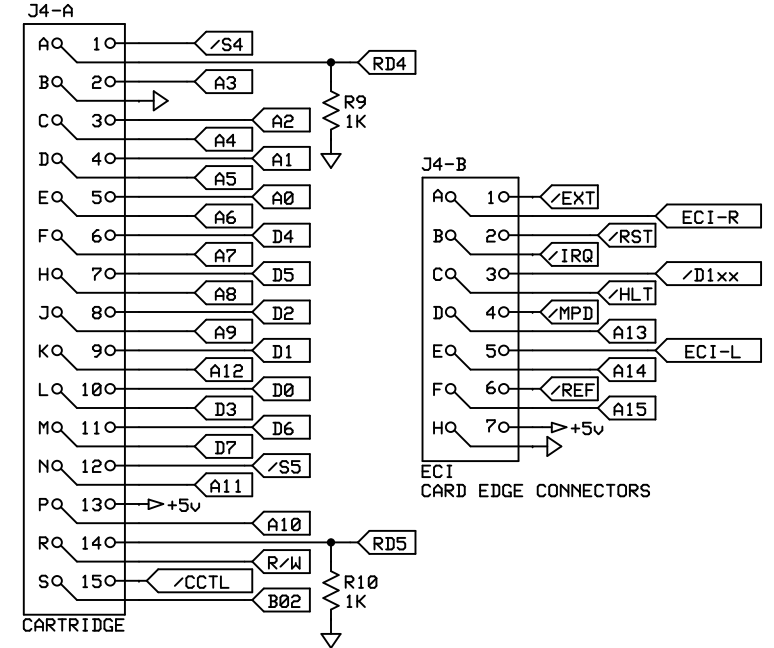
ULTIMATE 1MEG

## SIO PORTS



## INTERNAL PARALLEL EXPANSION

### CART/ECI



\*NOTE: THE PCB WILL SUPPORT BOTH THE ORIGINAL SIO JACK AND A DA-15M ALTERNATIVE, BUT NOT BOTH AT THE SAME TIME IN THE SAME POSITION. DA-15M SIO PORT IS COMPATIBLE WITH SDRIVE PIN ASSIGNMENTS SIO CONNECTOR J2 IS OPTIONAL AND SHOULD BE LEFT OUT IF THE GBS-8200 BOARD IS INSTALLED.

# ATARI 1088XLD COMPUTER

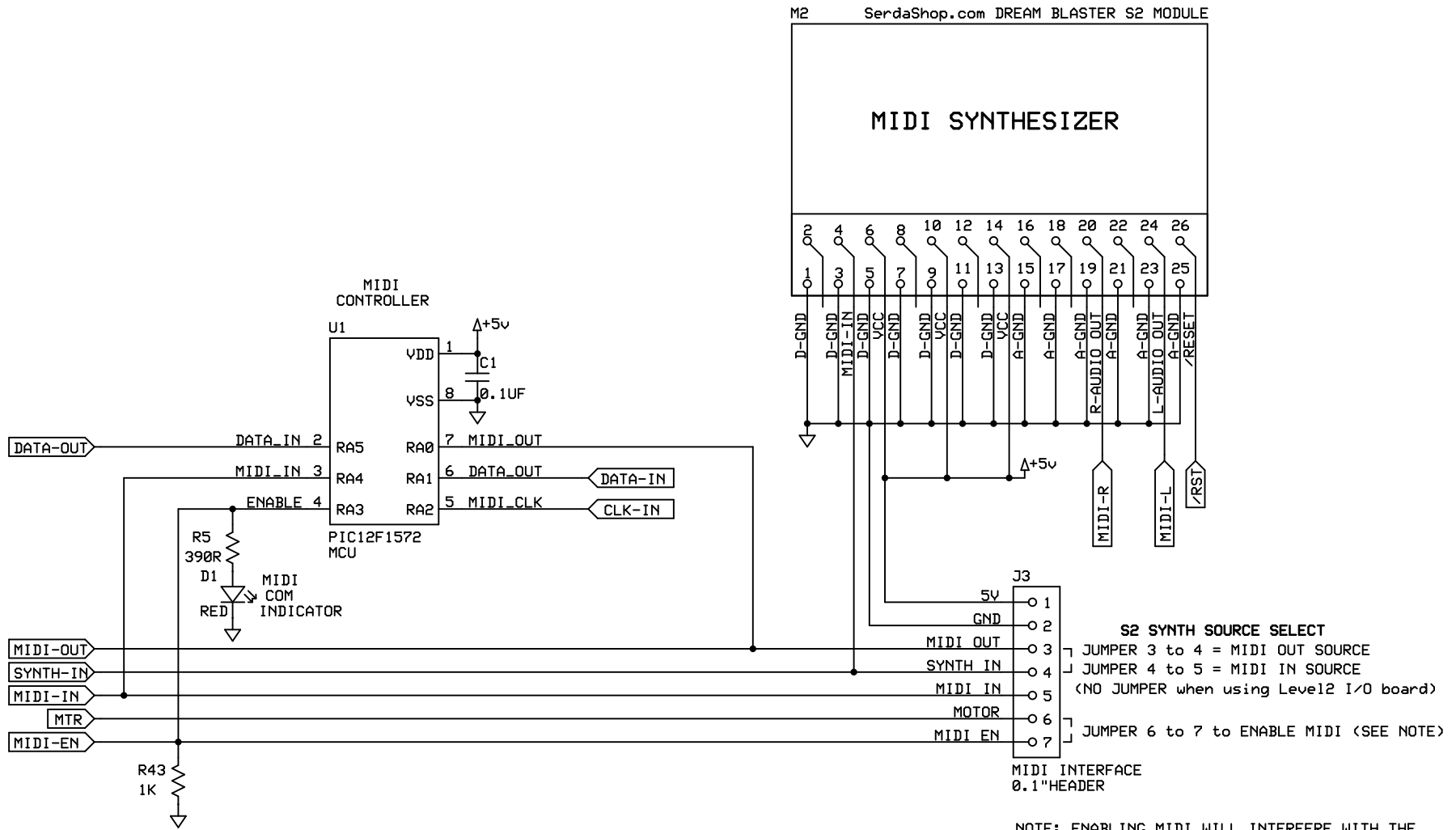
## An AtariBits Production

Michael St.Pierre

V1.1 RELEASE

Revised: 8/29/2019

SIO/CART



NOTE: ENABLING MIDI WILL INTERFERE WITH THE CASSETTE OR RVERTER FUNCTIONALITY

# ATARI 1088XLD COMPUTER

An AtariBits Production

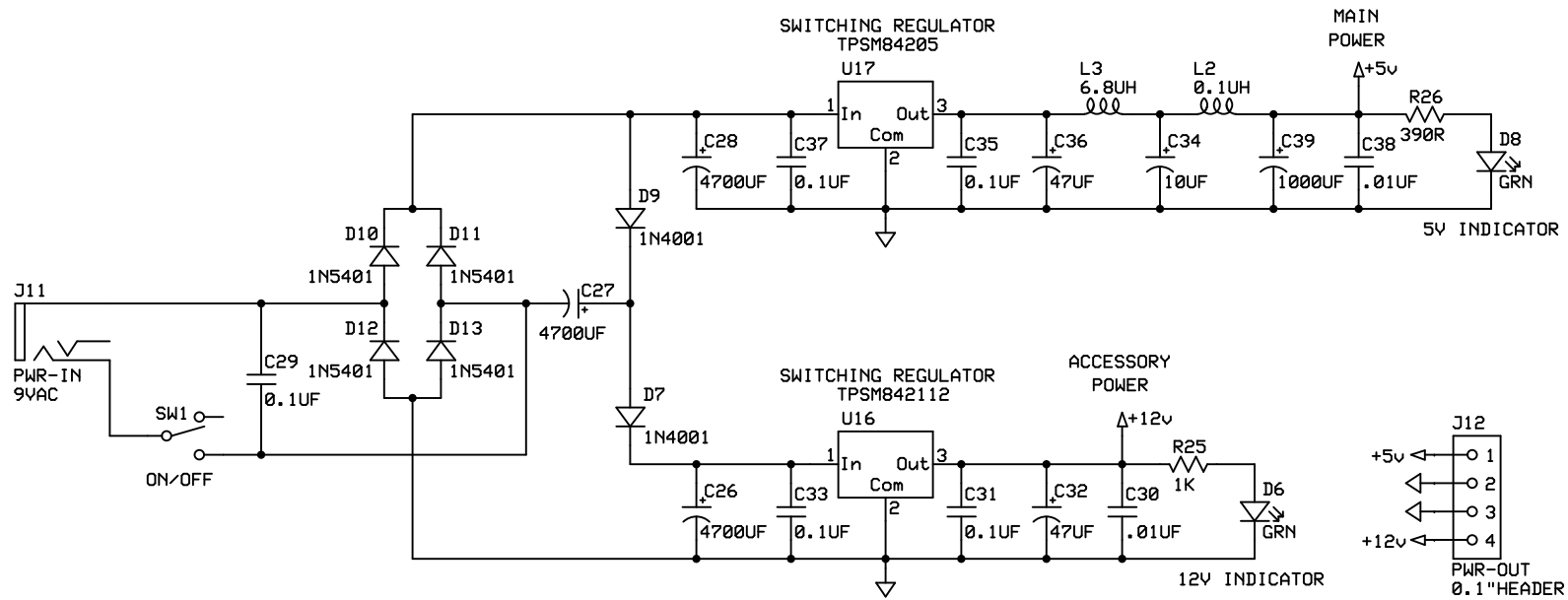
Michael St.Pierre

V1.1 RELEASE

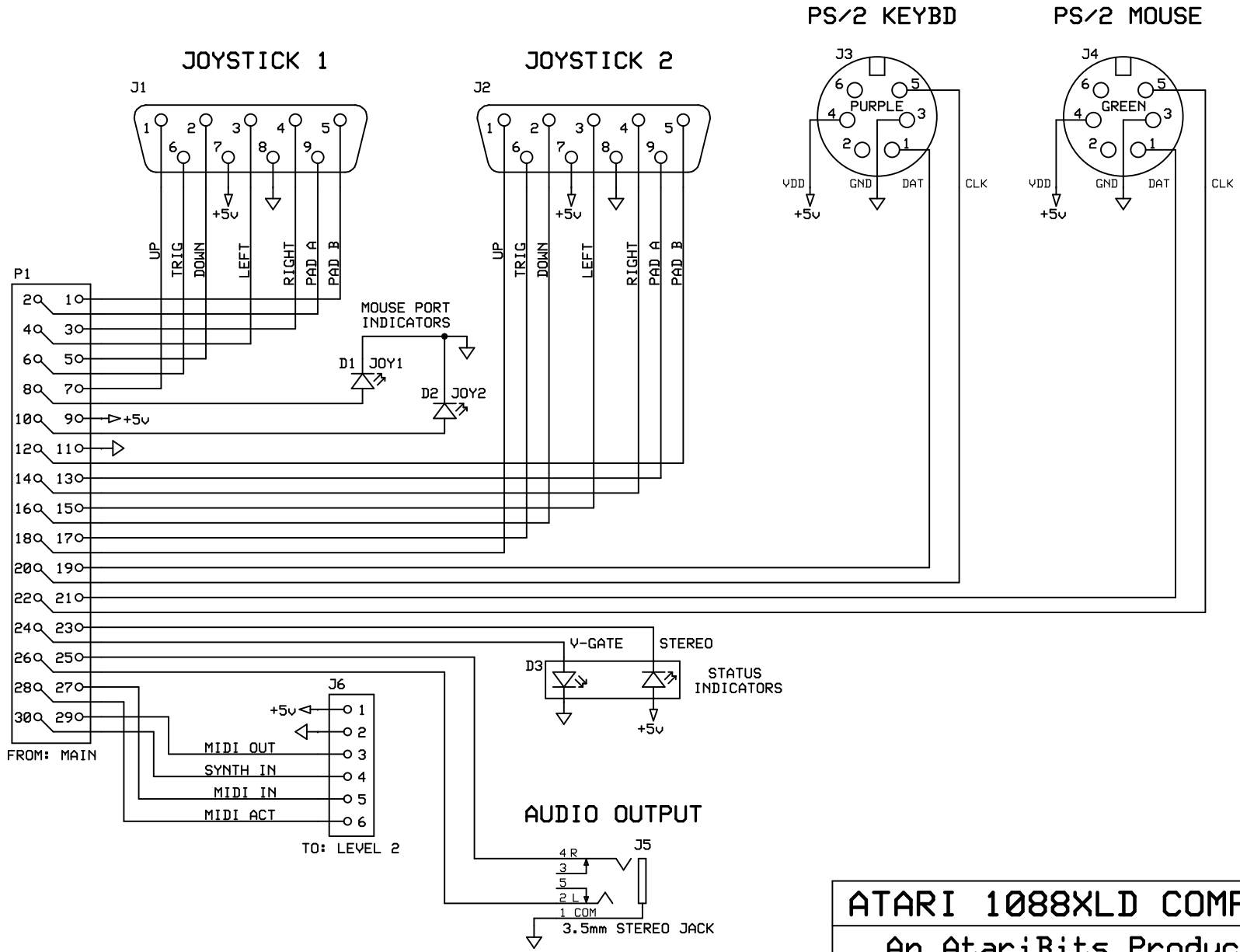
Revised: 8/29/2019

MIDI



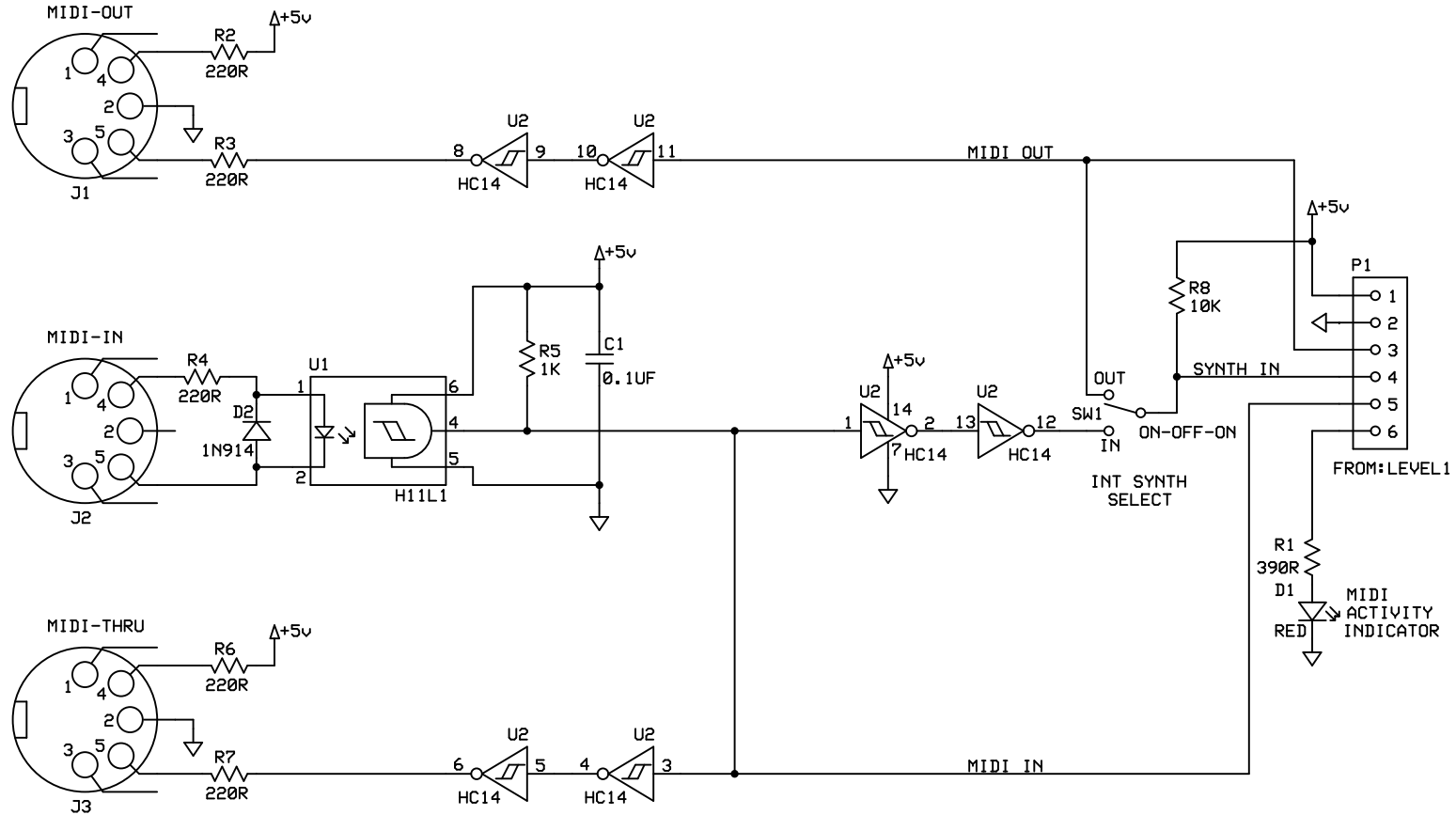


<b>ATARI 1088XL COMPUTER</b>		
<b>An AtariBits Production</b>		
Michael St.Pierre	V1.1 RELEASE Revised: 8/29/2019	POWER



**ATARI 1088XLD COMPUTER**  
 An AtariBits Production

Michael St.Pierre	V1.0 RELEASE	LEVEL 1 I/O
	8/4/2019	



**PARTS LIST**

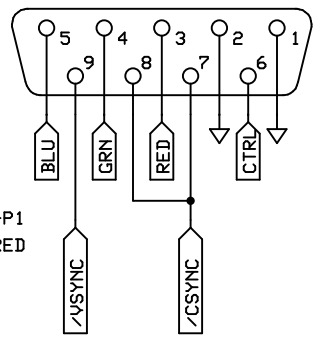
- C1            0.1UF CERAMIC CAPACITOR
- R1            390 OHM 1/4 WATT RESISTOR
- R2-R4, R6,R7   220 OHM 1/4 WATT RESISTOR
- R5            1K OHM 1/4 WATT RESISTOR
- R8            10K OHM 1/4 WATT RESISTOR
- D1            RED LED w/RIGHT ANGLE MOUNTING
- D2            GENERAL PURPOSE SILICON DIODE
- U1            LOGIC OPTO-ISOLATOR
- U2            HEX SCHMITT TRIGGER INVERTER
- J1-J3        5-PIN DIN RA PCB JACK
- P1            0.1" MALE PIN HEADER

<b>ATARI 1088XL COMPUTER</b>		
<b>An AtariBits Production</b>		
Michael St.Pierre	V1.0 RELEASE 8/4/2019	LEVEL 2 I/O

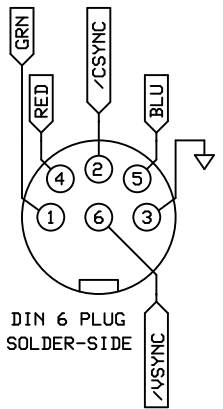
PHILLIPS CM8833-II  
 COMMODORE 1084S DB9  
 ATARI SC1435

VARIANTS: 1084ST, 1084S-P1  
 VSYNC & CTRL NOT REQUIRED

DB9 MALE SOLDER-SIDE VIEW

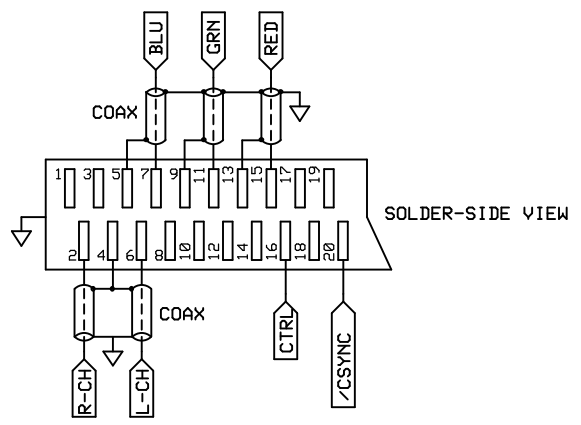


COMMODORE  
 1084S DIN



DIN 6 PLUG  
 SOLDER-SIDE

EUROPEAN SCART

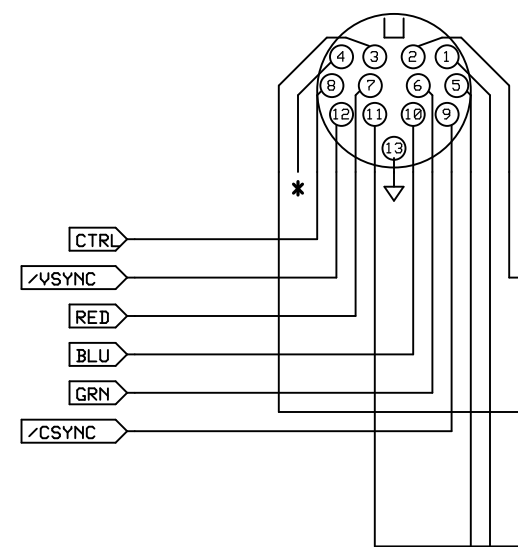


SOLDER-SIDE VIEW

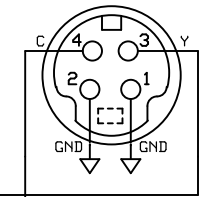
RGB

1088XLD AUDIO/VIDEO JACK

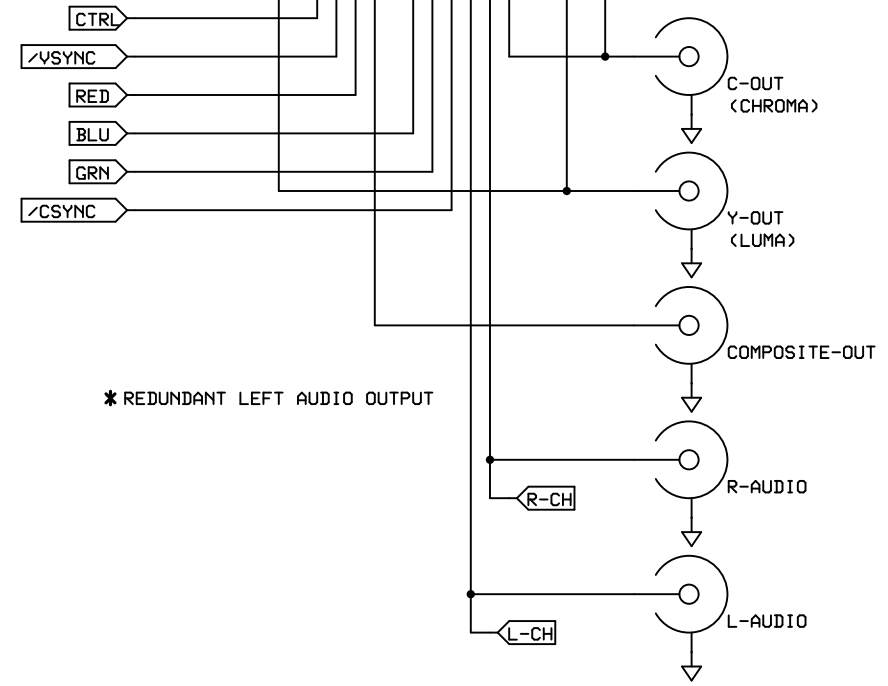
DIN 13 JACK FRONT VIEW  
 (PLUG SOLDER-SIDE VIEW)



MINI-DIN 4 PLUG  
 SOLDER-SIDE



S-VIDEO

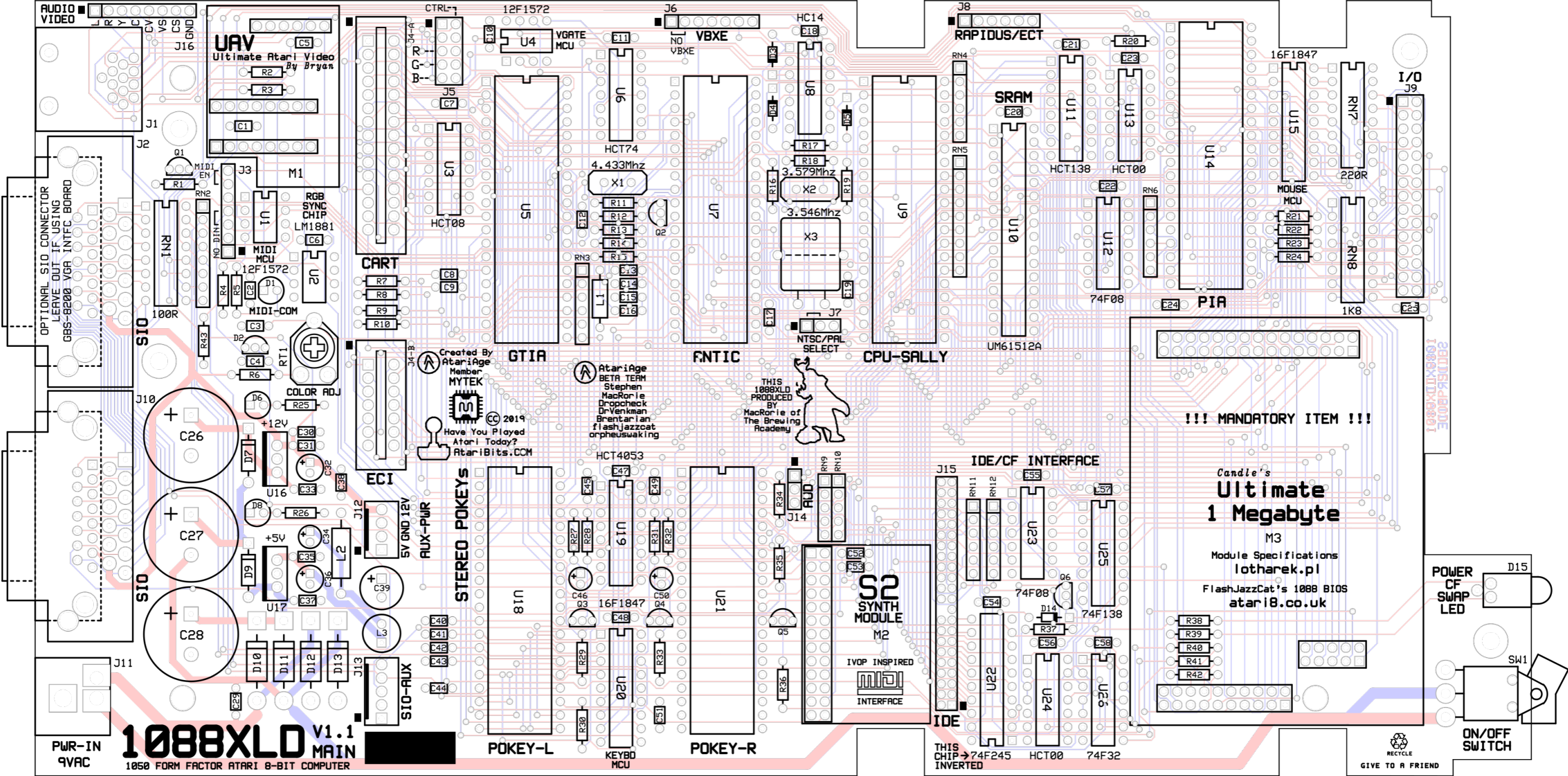


\* REDUNDANT LEFT AUDIO OUTPUT

STD VIDEO

- NOTE1: FOR OPTIMUM RESULTS IT'S BEST TO INDIVIDUALLY SHIELD SIGNAL WIRES
- NOTE2: DIN 13 RGB IS DIRECTLY COMPATIBLE WITH ATARI SC1224 ST MONITOR
- NOTE3: RGB VIDEO REQUIRES EITHER SOPHIA OR VBXE VIDEO BOARD INSTALLED
- NOTE4: STANDARD VIDEO REQUIRES UAY BOARD INSTALLED

<b>ATARI 1088XLD COMPUTER</b>		
An AtariBits Production		
Michael St.Pierre	V1.0 RELEASE 8/4/2019	VIDEO CONNECT



**1088XLD V1.1**  
**MAIN**  
 1050 FORM FACTOR ATARI 8-BIT COMPUTER

!!! MANDATORY ITEM !!!

Candle's  
**Ultimate 1 Megabyte**  
 M3  
 Module Specifications  
 lotharek.pl  
 FlashJazzCat's 1088 BIOS  
 atari8.co.uk

RECYCLE  
 GIVE TO A FRIEND

Created By  
 AtariAge  
 Member  
**MYTEK**  
 © 2019  
 Have You Played  
 Atari Today?  
 AtariBits.COM

AtariAge  
 BETA TEAM  
 Stephen  
 MacRorie  
 Dropcheck  
 DrVenkman  
 Brentarian  
 flashjazzcat  
 orpheuswaking

THIS  
 1088XLD  
 PRODUCED  
 BY  
 MacRorie of  
 The Brewing  
 Academy

2019SK-09001  
 1088XLD-V09001

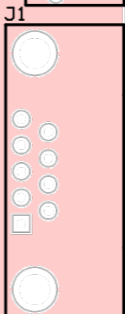
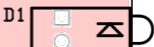
THIS  
 CHIP → 74F245  
 INVERTED



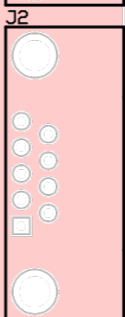
Created By  
AtariAge  
Member  
MYTEK



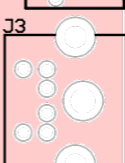
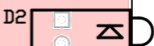
© 2019  
AtariBits.com



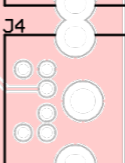
JOY1



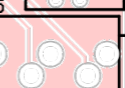
JOY2



KEYBD



MOUSE



AUDIO OUT



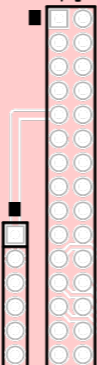
PRODUCED  
BY  
MacRorie of  
The Brewing  
Academy

COMP SIDE

LEVEL 1 1088XLD I/0

MALE PIN HEADER ON BOTTOM SIDE

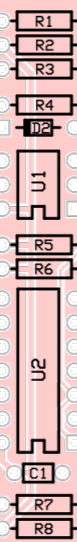
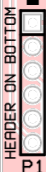
P1



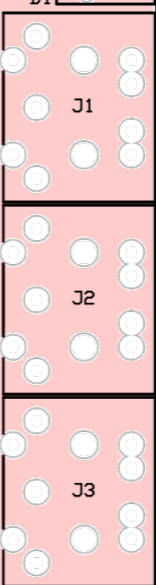
J6



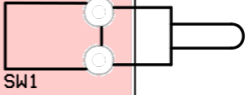
# LEVEL 2 1088XLD I/O



MIDI-OUT  
MIDI-IN  
MIDI-THRU



SYNTH SELECT



COMP SIDE

MOUNT  
-----  
HERE  
-----

CF-IDE44/2.0mm ADAPTER V.Hx



PRODUCED BY MacRorie of The Brewing Academy



Created By AtariAge Member MYTEK

© 2019

AtariBits.com

